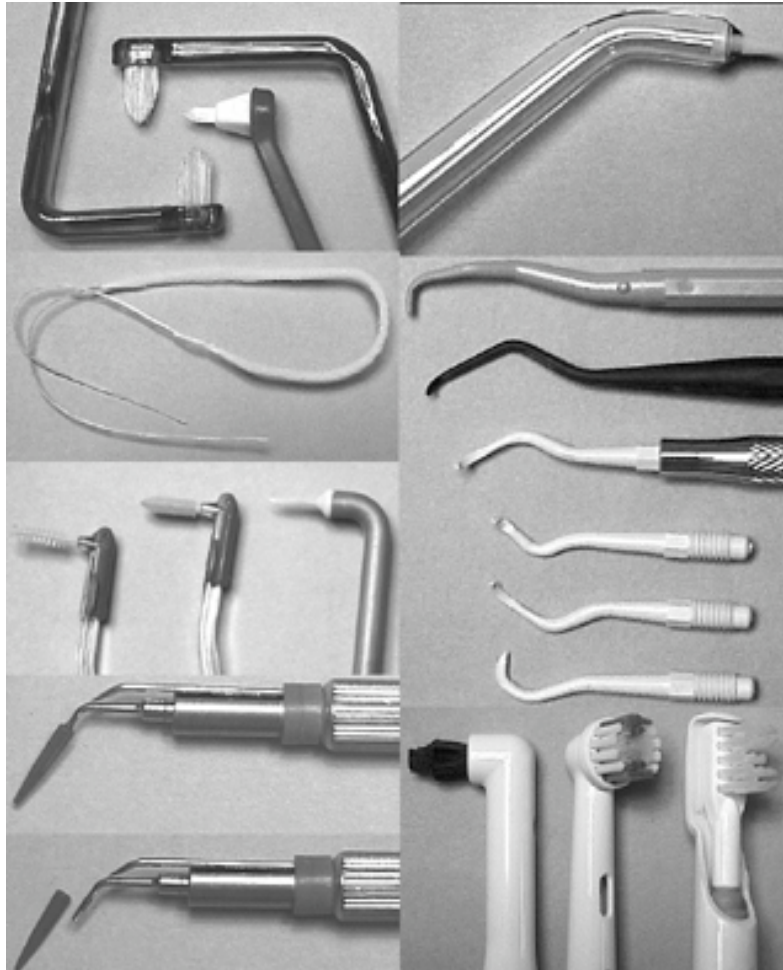


TEETH vs TITANIUM

- **How is a tooth different than an implant?**
 - **Sulcus vs Perimucosal Seal**
 - **PDL vs Osseointegration**
 - **Pocket depth criteria differs**
 - **Keratinized tissue criteria differs**
- **Maintenance of teeth vs implants**
 - **Patient's home care**
 - **Hygienist's role on Implant team**

Implant Maintenance Tools



IMPLANT MAINTENANCE INSTRUMENTS

INSTRUMENT	CONFIGURATION	CALCULUS
Implacare <i>Hu-Friedy</i>	Columbia 4R/4L Anterior Sickle H6/H7 Posterior Sickle 204S	disposable thin flexible plastic tips
Implant Propy <i>AIT</i>	Gracey 5/6, 11/12, 13/14 Columbia 13/14	bulky rigid sharpen
Hawe Neos (graphite) <i>Premier Dental</i>	Columbia 4R/4L Oral Facial Scaler	graphite/ plastic rigid brittle
The Implant Solutions <i>Surgical Innovations</i>	IS-1 Curet IS-2 Hoe	
TIS Insert <i>Tony Riso Co</i>	25 kHz or 30 kHz ultrasonic	
Quixonic <i>DENTSPLY</i>	Sonic Scaler SofTip	
Acteon-Stelec <i>Acteon</i>	Peizo Scaler ultrasonic PH2L, PH2R, PH1	
Profin <i>Dentatus</i>	EVA-123 ultrasonic	

Additions for implant maintenance

- **Plastic probe**
- **Plastic or titanium scaler**
- **Tooth paste or implant polishing
paste**
- **Articulating paper**

HYGIENIST'S METHOD

- **I Interview/Inspect**
- **M Mobility**
- **P Probe**
- **L Load**
- **A Accumulation**
- **N “Notch”**
- **T Tap**
- **S Scale/polish**

INTERVIEW-INSPECT

- **INTERVIEW for overall patient satisfaction**
- **INSPECT for overall visual assessment**
- **Document**
 - **Implant design**
 - **Implant location**
 - **Abutment interface**
 - **Prosthetic interface**
 - **Microgaps**
 - **Screw retention**

MOBILITY

- **Check MOBILITY - technique**
 - **Loose superstructure**
 - **Crown**
 - **Abutment**
 - **Screw**
 - **Loose implant**

PROBE

- **To PROBE or not**
 - **Value of probing**
 - **Tissue response not pocket depth**
 - **BOP?**
 - **Erythema?**
 - **Edema?**
 - **Exudate?**
 - **Recession?**

LOAD

- **Check the LOAD or occlusion**
 - **Overload contributes to failure of implant**
- **Check**
 - **Fremitus?**
 - **Bruxism?**
 - **Night Guard?**
- **Articulation paper**

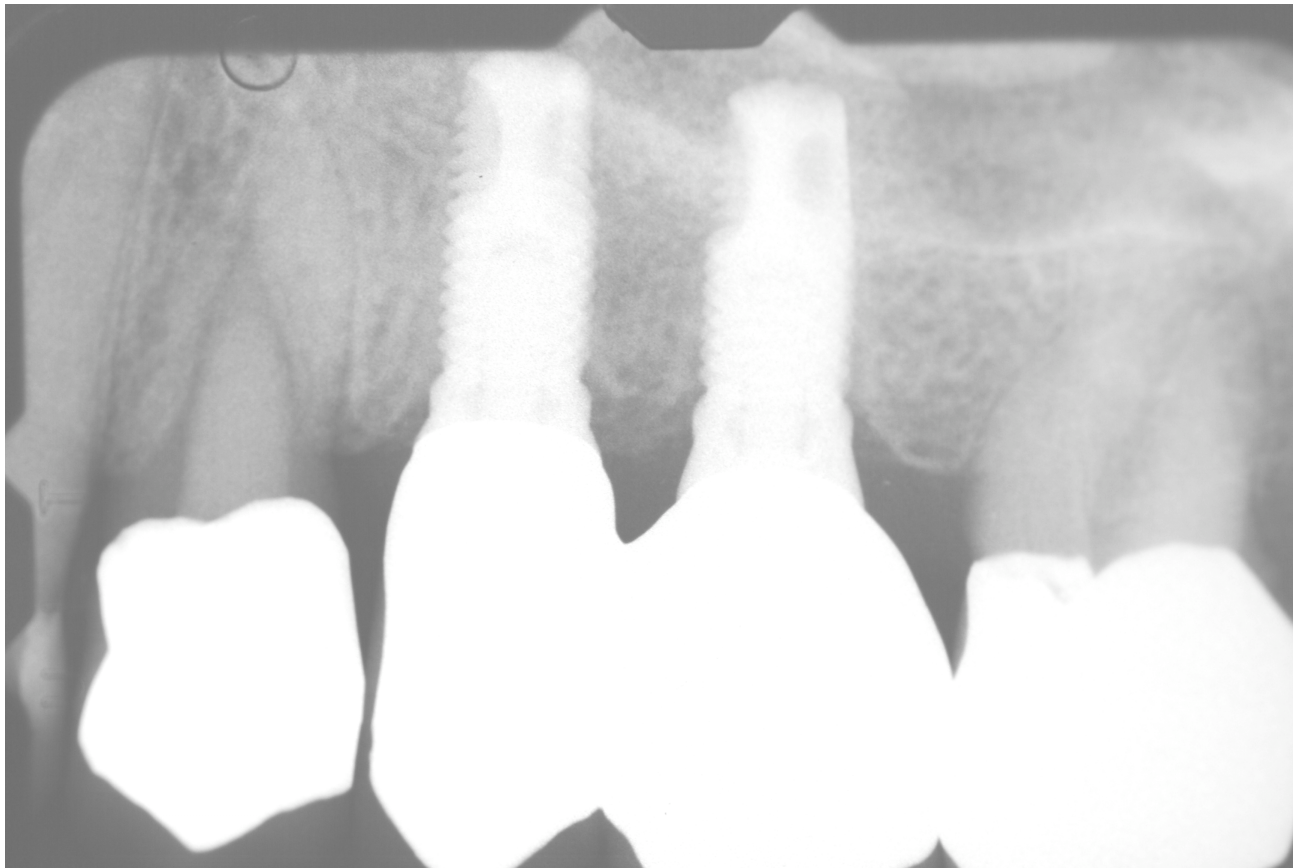
ACCUMULATION

- **Check ACCUMULATIONS**
 - **Plaque**
 - **Food**
 - **Calculus**
- **Home care aids**

“NOTCH”

- **Look for the “NOTCH” or thread of implant**
 - Crest of bone ideally at first “notch”
- **Xrays every 12 months**
- **Review xrays also for**
 - Density
 - Quality
 - Quantity

Notch



TAP

- **TAP it**
 - **Learn the sound of solid intergration**
 - **Check for pain/ discomfort**
 - **Tap it from the top and side**

SCALE-POLISH

- **SCALE supra and sub deposits**
 - **Plastic**
 - **Caution with Gold, Titanium instruments**
 - **Oral hygiene aids at appointment**
 - **Perio aid**
 - **Floss threaders**
 - **Proxybrush**
 - **Non-abrabsive polish**

Referral for treatment

- **Repeated exudate**
- **Change in pocket depth**
- **Change in patient comfort level**
- **Mobility**
- **Change in bone height**